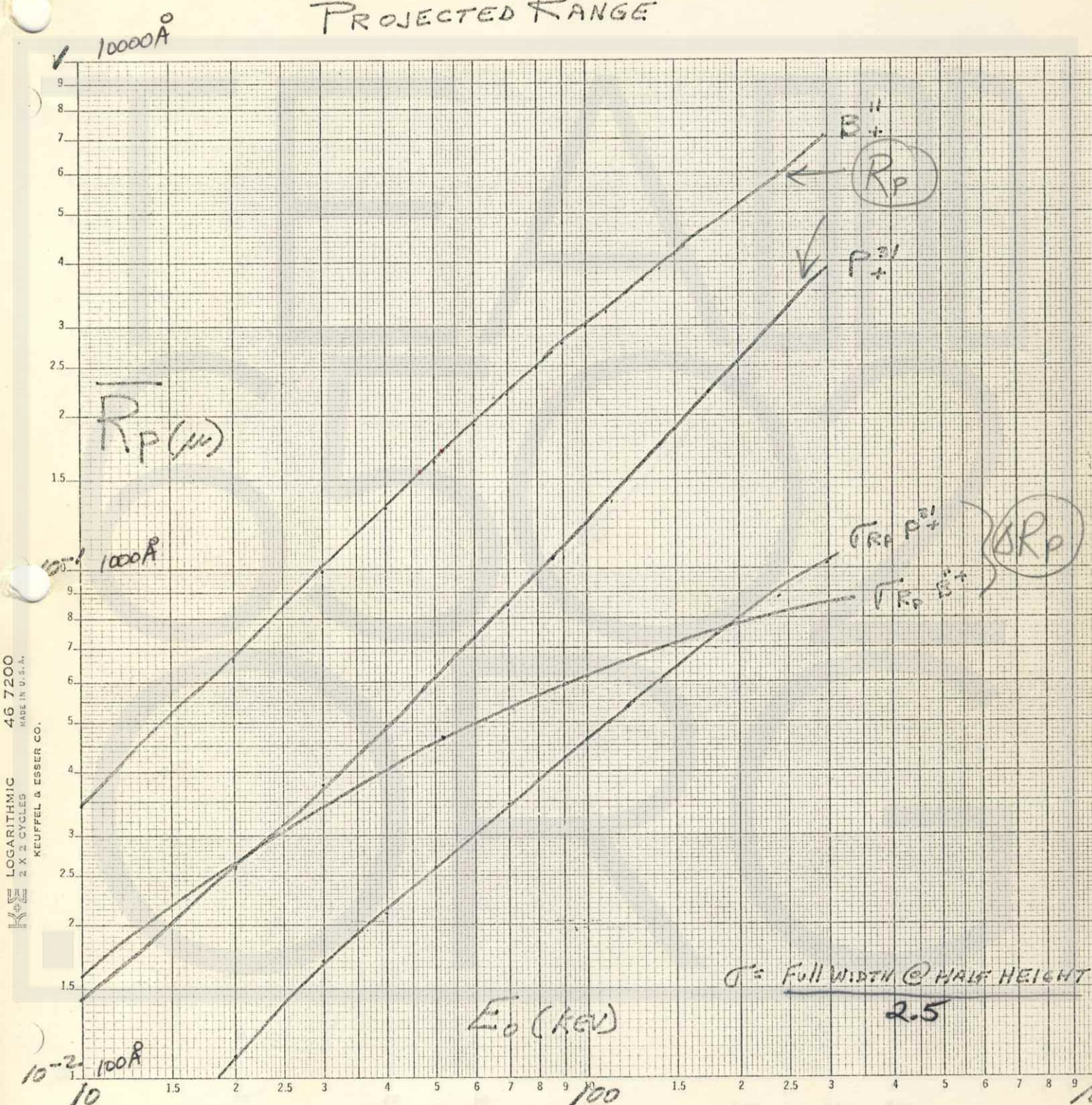


T.H.

PROJECTED RANGE



KE LOGARITHMIC
46 7200
MADE IN U.S.A.
KEUFFEL & ESSER CO.

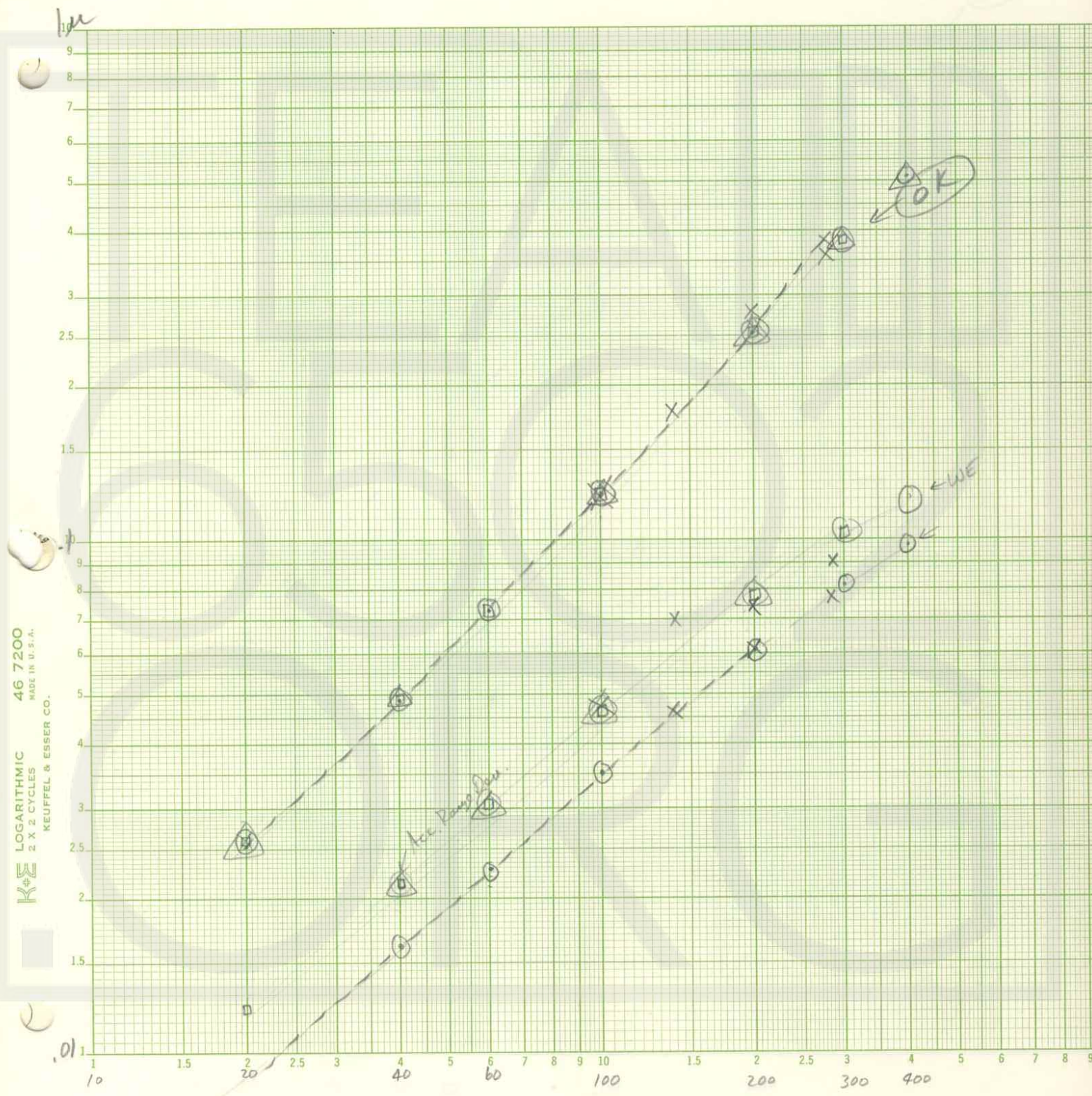
$\sigma =$ FULL WIDTH @ HALF HEIGHT
2.5

NOTE - $\bar{R}_p SiO_2 \approx 1.04 \bar{R}_p Si$

WAL: 790
10/1/74

Phosphorus

--- GIBBONS
△ - IEEE
□ Wittbower
○ Accelerators



46 7200
LOGARITHMIC
2 X 2 CYCLES
KEUFFEL & ESSER CO.

10 1.5 20 2.5 30 40 50 60 70 80 90 100 150 200 300 400

10

.01

OK

WE

Acc. Pump Data

BORON

--- GIBBONS
o - IEEE - MAYER
□ Withlower

10kA
M

OK

1kA

WE OK

KE LOGARITHMIC 46 7200
2 X 2 CYCLES
MADE IN U.S.A.
KEUFFEL & ESSER CO.

